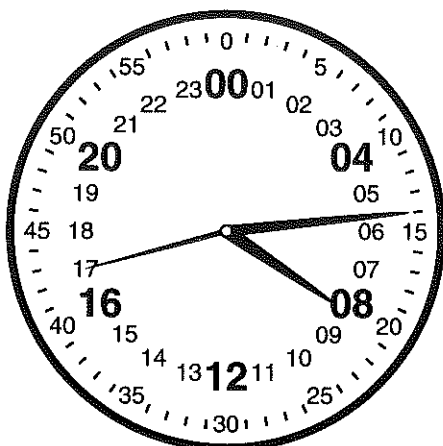
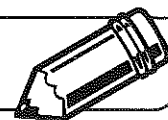


LESSON
6•9
Fractions in Military Time


Whole
day

On a military clock, the whole is 1 day or 24 hours. $\frac{1}{24}$ is one hour. The time shown on this clock face is 08:14:42 (8 hours, 14 minutes, and 42 seconds).

Using the clock face, write the fractions as days, hours, and minutes. The first one has been done for you.

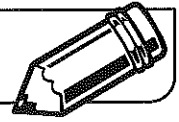
1. $\frac{2}{24} = \frac{1}{12}$ of a day = 2 hours = minutes

2. $\frac{18}{24} = \frac{\quad}{\quad}$ of a day = hours = minutes

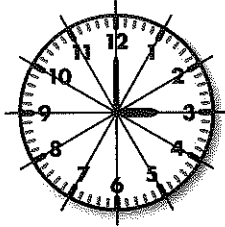
3. $\frac{10}{24} = \frac{\quad}{\quad}$ of a day = hours = minutes

4. $\frac{1}{2}$ hour = $\frac{\quad}{\quad}$ of a day

5. Explain how you found your answer for Problem 4.

LESSON
6•9**Writing Elapsed-Time Number Stories**

The numbers on a clock face divide one hour into twelfths. Each $\frac{1}{12}$ of an hour is 5 minutes.

**Whole**

hour

Use fractions to represent amounts of elapsed time and write a number story for a partner to solve.

Example:

Maria started her piano practice at 3:15. She practiced for $\frac{8}{12}$ of an hour. At what time did she finish practicing?

Think: $\frac{1}{12}$ hour = 5 minutes; $\frac{8}{12}$ hour is $8 * 5$, or 40 minutes; 40 minutes more than 3:15 is 3:55.

Maria finished practicing at 3:55.

Your Elapsed-Time Number Story:

Your Partner's Solution:

Explain your answer.
